

LETTER OF TRANSMITTAL

TO:

Global Infrastructure, Inc.
 Mack Jones Enterprises, Inc.
 KAM Contracting Southeast, LLC
 UWS, Inc
 B & B Plumbing and Underground
 F.S. Scarbrough, LLC
 Talley Construction, Inc.
 Complete Contracting Solutions, LLC

info@globalinf.co
mje1980.mj@gmail.com
jjkamcontracting@gmail.com
zach.hughes@uwsinc.net
cole@bbplumbingandunderground.com
alogan@fsscاربrough.com
timothy.fountain@talleyconstruction.net
chase@completecontractingllc.com

The Blue Book
 Dodge Data & Analytics
 Builders Exchange of Tennessee
 Associated General Contractors
 ConstructConnect

emcveigh@mail.thebluebook.com
dodge.bidding@construction.com
heather@bxtn.org
planroom@agcetn.org
rachael.taylor@constructconnect.com

City of Fort Oglethorpe

Phil Minton
 Kathy Bradley

pminton@fortoglethorpega.gov
kbradley@fortoglethorpega.gov

FROM: Wil Jackson, P.E.

DATE: September 15, 2025

PROJ. NO.: G24024

SUBJECT: Addendum No. 2
 City of Fort Oglethorpe
 Battlefield Parkway Water Line Replacement Contract 1/ Contract 2

PAGES: 19 pages to follow

<p>PLEASE RESPOND</p> <p>➔ ➔ ➔ ➔</p>	<p style="text-align: center;">TO CONFIRM RECEIPT OF THIS ADDENDUM NO. 2 PLEASE SIGN AND EMAIL TO CTI</p> <p style="text-align: center;">vvisco@ctiengr.com</p> <p>Company _____</p> <p>Signature _____</p> <p>Title _____</p> <p>Date _____</p>
---	---

ID 863891

ADDENDUM NO. 2

BATTLEFIELD PARKWAY WATER LINE REPLACEMENT CONTRACT 1/ CONTRACT 2

CITY OF FORT OGLETHORPE, GEORGIA CTI PROJECT NO. G24024

The following changes shall be made to the Contract Documents, Specifications, Clarifications, and Drawings:

I. CONTRACT DOCUMENTS

A. **Section 00 42 00, Bid Schedule.**

1. Contract 1: DELETE pages 00 42 00-1.1 through 00 42 00-7.1 and REPLACE with the attached 00 42 00-1.2 through 00 42 00-9.2
2. Contract 2: DELETE pages 00 42 00-1.1 through 00 42 00-7.1 and REPLACE with the attached 00 42 00-1.2 through 00 42 00-8.2

II. CLARIFICATIONS

- A. The contract time is 240 days for each Contract. They are intended to be constructed concurrently.
- B. The project is funded locally and has no domestic/import requirements for pipe material.
- C. An allowance of \$100,000 has been included in the bid schedule for each Contract. This contingency shall cover unforeseen circumstances that are encountered or discovered during construction which require additional work outside the current project scope. Bid Item C1 has been added to the Bid Schedule for each Contract.
- D. Wiring for each Inductive Loop Detectors at an intersection are intended to be fully removed and wiring replaced up to either the pull box or the pole. Revised Bid Item 34 00 00e and added Bid Items 34 00 00f and 34 00 00g on Contract 1 reflect this clarification.
- E. Drawing C3.03 is re-issued as part of this addendum to fix the misprinted drawing issued via Addendum No. 1.

III. DRAWINGS

A. **Contract 2 Drawings**

1. DELETE C3.03 and REPLACE with C3.03

Date: September 15, 2025

CTI Engineers, Inc.
/s/ Wil Jackson, P.E.
Project Manager

BID SCHEDULE (CONTRACT 1)
BATTLEFIELD PARKWAY WATER LINE REPLACEMENT
CITY OF FORT OGLETHORPE
FORT OGLETHORPE, GEORGIA

SCHEDULE I - BATTLEFIELD PARKWAY WATER LINE

Item No.	DESCRIPTION	Unit	Est. No. of Units	Unit Price	Item Total
00 61 13	Performance & Payment Bonds (Max 2% of Bid)	LS	1		\$ -
00 72 00	General Conditions , Including Project Management, Site Safety and Security, Site Utilities, Portable Toilet, Maintenance, and Supervision	LS	1		\$ -
01 11 00	Mobilization (Maximum 2.5% of Bid) Including Locating and Excavating (pot-holing) the Existing Utilities, Coordination with the City of Fort Oglethorpe, and Staking or marking center line for Pipe Alignment	LS	1		\$ -
01 32 38	Pre-Construction Video Taping of Existing Ground Conditions along the path of the Proposed Water Line Improvements	LS	1		\$ -
01 22 00b	Traffic Control Devices for Traffic Control and Road Closure to Meet MUTCD and GDOT Requirements and in Coordination with the City of Fort Oglethorpe	LS	1		\$ -
01 78 39	GPS Survey for Record Drawings	LS	1		\$ -
03 05 23	Utility Line Crossings of Highways & Roads				
03 05 23a	Installation of 8-in DIP Carrier Pipe in Existing 16-in Steel Casing Pipe , Including Excavation of Casing Ends, Installation of Pipe, Restrained Joint Gaskets, Casing Spacers, End Seals, Compacted Backfill of Trench, Topsoil, Fine Grading, Seeding, and Mulching	LF	110		\$ -
03 30 00	Cast-In-Place Concrete , Complete in Place as Specified and/or Shown on the Drawings				
03 30 00a	Cast-In-Place Concrete - 3,000 PSI Class B for Thrust Blocks, Pipe Encasement, and Pipe Protection for Open Cut Trenches in Paved Areas	CY	75		\$ -
03 30 00b-1	Class A (4,000 psi) 8-inch Thick Concrete for Driveway Apron and Parking Lot Repairs , Including Excavation, Bedding, Reinforcement Wire, Form Work, Concrete Mix, Pour and Finish Rubbing, Complete In Place as Shown in Detail on the Plans. (As directed by the Engineer) (GAB Base Stone Paid Separately)	SF	1,250		\$ -
03 30 00b-2	Class A (4,000 psi) 8-inch Thick Concrete Pavement Base for Asphalt Road Repairs per GDOT Standard 1401 , Including Excavation, Bedding, Reinforcement Wire, Form Work, Concrete Mix, Pour and Finish Rubbing, Complete In Place as Shown in Detail on the Plans. (As directed by the Engineer) (GAB Base Stone Paid Separately)	SF	3,600		\$ -

Item No.	DESCRIPTION	Unit	Est. No. of Units	Unit Price	Item Total
03 30 00c	Class A (4,000 psi) 4-inch Thick Concrete for Sidewalk Repairs , Including Excavation, Bedding, Reinforcement Wire, Form Work, Concrete Mix, Pour and Finish Rubbing, Complete In Place as Shown in Detail on the Plans. (As directed by the Engineer) (GAB Base Stone Paid Separately)	SF	1,230		\$ -
03 30 00d	Class A (4,000 psi) 8-inch Thick Concrete for Median Repairs , Including Excavation, Bedding, Reinforcement Wire, Form Work, Concrete Mix, Pour and Finish Rubbing, Complete In Place as Shown in Detail on the Plans. (As directed by the Engineer) (GAB Base Stone Paid Separately)	SF	130		\$ -
03 30 00e	Class A (4,000 psi) 4-inch Thick Concrete for Curb Cut Ramp , Including Excavation, Bedding, Reinforcement Wire, Form Work, Concrete Mix, Pour Finish Rubbing, and Detectable Warning Surface, Complete In Place as Shown in Detail on the Plans. (As directed by the Engineer) (GAB Base Stone Paid Separately)	SF	230		\$ -
03 30 00f-1	Class A (4,000 psi) 6-inch Thick Concrete for Header Curb (GDOT Standard 9032B, Type 2) , Including Excavation, 2-Inch Bedding Stone, Form Work, Expansion Joints, Finish Rubbing, and Site Restoration, Complete-In-Place	LF	1,150		\$ -
03 30 00f-2	Class A (4,000 PSI) Concrete for Curb and Gutter (GDOT Standard 9032B, Type 2) , Including Form Work, Expansion Joints, Finish Rubbing, and Roadway Repair. Complete-In-Place.	LF	750		\$ -
31 20 00	Earthwork				
31 20 00a	Unclassified Demolition/Excavation of Existing Roadway, Curbs, Sidewalks, Brick, and Debris Required for Water Line Trench and Temporary Service Lines, Including Preservation of Existing Utilities located near Water Line Trench, Temporary Removal of Signage and Lamp Posts, Fences, etc.	LS	1		\$ -
31 20 00a-1	Demolition and Removal of Existing Asphalt Pavement , Including Saw-cutting, Excavation, and Disposal of Asphalt Debris	LF	4,000		\$ -
31 20 00b-1	Site Restoration Complete , for Areas outside Paved Roadway or Sidewalk Areas, Including Restoration of Landscaping, Business Signs, Fences, etc.	LS	1		\$ -
31 20 00b-2	Site Restoration Complete , Including Temporary Removal and Re-Installation of Lamp Posts with All Associated Appurtenances As Required for Construction of New Water Line, Including Lamp Post Foundation and miscellaneous Fittings within the Foundation (As Directed by Engineer)	EA	30		\$ -

Item No.	DESCRIPTION	Unit	Est. No. of Units	Unit Price	Item Total
31 20 00c-1	Crushed Stone Backfill , in Trench for 8-in Water Lines in Streets and Asphalt or Concrete Driveways from Top of Bedding to Finished Grade	LF	2,720		\$ -
31 20 00c-2	Crushed Stone Backfill , in Trench for Permanent Water Service Lines in Streets and Asphalt or Concrete Driveways from Top of Bedding to Finished Grade (Temporary Water Service Lines Paid Separately)	LF	300		\$ -
31 20 00d	Crushed Stone Bedding Material , in Excess of that Required for Standard Bedding and Haunching, where Unsuitable Soil is Encountered or where Additional Material for Bedding is Required or as Directed by the Engineer, Including Undercut Excavation, Disposal, and Stone Placement	CY	150		\$ -
31 20 00e-1	Compacted Crushed Base Stone (GAB) for Asphalt and Concrete Driveways and Parking Areas Pavement and Repair Areas , Including Stone Placement, Compaction, and Fine Grading for Roads, Parking Lots, Driveways, and Transitions to Existing Driveways	Tons	250		\$ -
31 20 00e-2	Compacted Crushed Base Stone (GAB) for Concrete Sidewalk, Curb Ramp, and Repair Areas , Including Stone Placement, Compaction, and Fine Grading for Roads, Parking Lots, Driveways, and Transitions to Existing Driveways	Tons	50		\$ -
31 20 00f-1	Trench Rock Excavation by Drill & Blast, Rock Trenching, or Hoe-ramming Methods, Including Hauling and Proper Disposal of Spoil Materials	LF	1,000		\$ -
31 20 00f-2	Clean Fill Dirt Backfill , for Initial Backfill above Pipe in areas where Trench Rock Removal was performed (As Directed by the Engineer)	CY	500		\$ -
31 20 00g	Sifted Topsoil (Purchased and Imported to Project Site) as Approved by Engineer, Not Including On-site Soil	CY	550		\$ -
31 20 00h	Final Grading and Cleanup of areas outside Sidewalks, Driveways, Parking Lots, and Roads, Including Topsoil Placement, and Grading (Not Including Grassing and Mulch)	LF	3,150		\$ -
31 25 00	Sedimentation and Erosion Control				
31 25 00a	Inlet Sediment Trap (Sd2) , For Inlet Protection Including Installation, Maintenance, and Removal	EA	10		\$ -
31 25 00b	Construction Entrance (CO) Including Stone and Geotextile Filter Fabric	EA	1		\$ -
31 25 00c	Concrete Washout Structure (CW) , Including Installation, Maintenance, and Removal	EA	5		\$ -

Item No.	DESCRIPTION	Unit	Est. No. of Units	Unit Price	Item Total
32 10 00	New and Replacement Paving - Including Materials				
32 10 00a	Heavy Duty Asphalt Pavement Replacement for Roads, Trench-Width with 2.5" of 19 mm GDOT mix and 1.5" of 9.5 mm GDOT mix, Including Saw-cutting per GDOT Standard 1401	Tons	50		\$ -
32 10 00b	Asphalt Pavement Replacement for Driveways and Parking Lots, Trench-Width with 4" of 19 mm Binder Mix, Including Saw-cutting and Base Stone Compaction	Tons	250		\$ -
32 10 00c	Asphalt Pavement Milling for Trench Width Patch Paving 2-Inches Deep , Including Demolition, Excavation, Traffic Control, Hauling, and Disposal per Local Rules and Regulations (6-Inch Minimum Beyond Trench Width)	LF	4,000		\$ -
32 10 00d	Asphalt Pavement Replacement for Driveways and Parking Lots, Trench-Width with 2" of 9.5 mm GDOT Topping Mix	Tons	150		\$ -
32 92 19	Seeding and Mulching - Including Materials				
32 92 19a	Temporary Mulching (Ds1)	LF	3,150		\$ -
32 92 19b	Temporary Seeding and Mulching (Ds2)	LF	3,150		\$ -
32 92 19c	Permanent Seeding And Mulch (Ds3) , Including Topsoil placement, Seed Fertilizer, Limestone, and Mulch	LF	3,150		\$ -
33 11 00	High Density Polyethylene (HDPE) Sleeve (Poly-Wrap) - Including Materials				
33 11 00a	HDPE Poly-Wrap for 8-in Ductile Iron Pipe Installed in Trench near existing Gas Lines	LF	3,560		\$ -
33 12 13	Water Services				
	3/4-inch or 1-inch Water Services - Including Material, Labor, and Equipment				
33 12 13a	8-inch x 3/4-inch Double Strap Tapping Saddle , Including Excavation, Tap, Corporation Stop, Complete-in-place	EA	30		\$ -
33 12 13a-1	Permanent 3/4-inch Type K Copper Tubing by Open Cut	LF	1,000		\$ -
33 12 13a-2	Reconnect Permanent 3/4-inch Copper Service Line to Existing Water Service Line or Water Meter , Including Miscellaneous Fittings or Couplings, Backfill, Grading, Seeding, and Straw Mulch	EA	30		\$ -
33 12 13b	8-inch x 1-inch Double Strap Tapping Saddle , Including Excavation, Tap, Corporation Stop, Complete-in-place	EA	6		\$ -
33 12 13b-1	Permanent 1-inch Type K Copper Tubing by Open Cut	LF	400		\$ -
33 12 13b-2	Reconnect Permanent 1-inch Copper Service Line to Existing Water Service Line or Water Meter , Including Miscellaneous Fittings or Couplings, Backfill, Grading, Seeding, and Straw Mulch	EA	6		\$ -
33 12 13c	Relocate Existing Water Meter , Including, Backfill, Grading, Seeding, and Straw Mulch (If required for Installation of new DIP Water Line or Temporary Service Line)	EA	30		\$ -

Item No.	DESCRIPTION	Unit	Est. No. of Units	Unit Price	Item Total
33 12 13d	2-inch Water Services - Including Material, Labor, and Equipment				
33 12 13d-1	8-in x 2-in Double Strap Tapping Saddle , Including Excavation, Tap, Corporation Stop, Complete-in-place	EA	5		\$ -
33 12 13d-2	Permanent 2-in Type K Copper Tubing by Open Cut , Including Excavation, Bedding, and Backfill for Complete Installation	LF	100		\$ -
33 12 13d-3	Reconnect Permanent 2-in Copper Service Line to Existing Water line or Meter , Including Miscellaneous Fittings or Couplings, Backfill, Grading, Seeding, and Straw Mulch	EA	5		\$ -
33 12 19	Hydrants - Including Material, Labor, and Equipment				
33 12 19a	New Fire Hydrant Assembly Complete , Including Hydrant, Anchor Coupling, 6-in Gate Valve, Thrust Restraint, and Stone Bedding (MJ Anchor Tee and Pipe Length to be Paid in Other Pay Items)	EA	13		\$ -
33 12 19b	Removal of Existing Fire Hydrant Assembly , Including Excavation, Removal of Existing Hydrant, Pipe, Fittings, Valve, and Appurtenances, Disposal of Soil and Debris, and Backfill	EA	11		\$ -
40 05 13.53	Ductile Iron Pipe (DIP) - Including Material, Labor and Equipment				
40 05 13.53a	Removal of Existing 8-in PVC and Replacement in-place with New 8-in Ductile Iron Pipe Installed in Trench, Including All Materials, Labor and Equipment	LF	3,500		\$ -
40 05 13.53a-1	New 8-in Ductile Iron Pipe Installed in Trench, Including All Materials, Labor and Equipment	LF	2,500		\$ -
40 05 13.53b	Ductile Iron MJ Pipe Fittings (Published Weights for Ductile Iron, AWWA C-153 Compact Fittings)				
	8-inch Fittings and Gaskets - Including Material, Labor, and Equipment				
40 05 13.53b-1	8-in Miscellaneous Ductile Iron Fittings Not Itemized for Payment per Each (Paid by Weight)	Lbs.	1,500		\$ -
40 05 13.53b-2	8-in x 8-in (Branch) MJ Tee	EA	11		\$ -
40 05 13.53b-3	8-in x 6-in (Branch) MJ Tee	EA	1		\$ -
40 05 13.53b-4	8-in x 6-in MJ Anchor Tee	EA	13		\$ -
40 05 13.53b-5	8-in 90 degree MJ Bend	EA	3		\$ -
40 05 13.53b-6	8-in 45 degree MJ Bend	EA	1		\$ -
40 05 13.53b-7	8-in 22.5 degree MJ Bend	EA	6		\$ -
40 05 13.53b-8	8-in x 6-in MJ Reducer	EA	2		\$ -
40 05 13.53b-9	8-in MJ Cap	EA	1		\$ -
40 05 13.53b-10	8-in MJ Sleeve	EA	7		\$ -
40 05 13.53b-11	8-in Anchor Coupling	EA	36		\$ -
40 05 13.53b-12	8-in Foster Adaptor	EA	36		\$ -
40 05 13.53b-13	8-in Mechanical Joint Restraint Devices	EA	177		\$ -
40 05 13.53b-14	8-in Bell or Pipe Joint Restrained Pipe Devices or Gaskets	EA	243		\$ -

Item No.	DESCRIPTION	Unit	Est. No. of Units	Unit Price	Item Total
40 05 13.53c	6-inch Fittings and Gaskets - Including Material, Labor, and Equipment				
40 05 13.53c-1	6-in Miscellaneous Ductile Iron Fittings Not Itemized for Payment per Each (Paid by Weight)	Lbs.	300		\$ -
40 05 13.53c-2	6-in x 6-in (Branch) MJ Tee	EA	2		\$ -
40 05 13.53c-3	6-in 90 degree MJ Bend	EA	1		\$ -
40 05 13.53c-4	6-in MJ Cap	EA	2		\$ -
40 05 13.53c-5	6-in MJ Sleeve	EA	3		\$ -
40 05 13.53c-6	6-in Anchor Coupling	EA	6		\$ -
40 05 13.53c-7	6-in Foster Adaptor	EA	6		\$ -
40 05 13.53c-8	6-in Mechanical Joint Restraint Devices	EA	21		\$ -
40 05 13.53c-9	6-in Bell or Pipe Joint Restrained Pipe Devices or Gaskets	EA	6		\$ -
40 05 13.53d	Connection to Existing Water Line - Including Material, Labor, and Equipment				
40 05 13.53d-1	Connection to Existing 8-in PVC Water Line by Cut-In Method , Including All Materials, Labor, Equipment, Supervision, and Coordination with Fort Oglethorpe	EA	2		\$ -
40 05 13.53d-2	Connection to Existing 6-in PVC Water Line by Cut-In Method , Including All Materials, Labor, Equipment, Supervision, and Coordination with Fort Oglethorpe	EA	1		\$ -
40 05 13.53d-3	Connection to Existing 8-in Gate Valve , Including All Materials, Labor, Equipment, Supervision, and Coordination with Fort Oglethorpe	EA	9		\$ -
40 05 13.53d-4	Connection to Existing 8-in PVC Water Line by Wet Tap Method , Including All Materials, Labor, Equipment, Supervision, and Coordination with Fort Oglethorpe	EA	4		\$ -
40 05 13.53d-5	Connection to Existing 6-in PVC Water Line by Wet Tap Method , Including All Materials, Labor, Equipment, Supervision, and Coordination with Fort Oglethorpe	EA	3		\$ -
40 05 61	Valves - Including Material, Labor, and Equipment				
40 05 61a	8-in Gate Valve Installed , Including Valve Box & Cover, Concrete Support Block, Thrust Block, and Valve Box Extensions	EA	35		\$ -
40 05 61b	6-in Gate Valve Installed , Including Valve Box & Cover, Concrete Support Block, Thrust Block, and Valve Box Extensions	EA	3		\$ -
40 05 61c	8-in Gate Valve Installed on Existing 8-in PVC Water Line by Cut-in Method , Including Coordination with the City of Fort Oglethorpe and Affected Properties, Valve Box & Cover, Concrete Support Block, Thrust Block, and Valve Box Extensions	EA	7		\$ -
40 05 61d	Removal of Existing 8-in Gate Valve , Including Excavation, Removal of Existing Valve and Appurtenances, Disposal of Soil and Debris, and Backfill	EA	5		\$ -

Item No.	DESCRIPTION	Unit	Est. No. of Units	Unit Price	Item Total
34 00 00	Signs, Striping, and Signalization				
34 00 00a	Temporary Removal and Re-Installation of Existing Sign	EA	16		\$ -
34 00 00b	5" White Thermoplastic Solid Stripe	LF	550		\$ -
34 00 00c	24" White Thermoplastic Solid Strip for Stop Bar	LF	76		\$ -
34 00 00d	White Thermoplastic Solid Stripe for Crosswalk	LF	65		\$ -
34 00 00e	Inductive Loop Detector Removal	EA	6		\$ -
34 00 00f	Inductive Loop Detector Wire, No. 14 AWG Stranded / 1000-ft	Reel	5		\$ -
34 00 00g	Inductive Loop Detector Saw-Cutting	LF	1,500		\$ -
Construction Contingency					
C1	Construction Allowance for Unforeseen Circumstances and/or Discoveries Encountered During Construction that Require Additional Work Beyond the Current Scope of Work (As directed by the Engineer)	LS	1	\$ 100,000.00	\$ 100,000.00
TOTAL SCHEDULE I					

Item No.	DESCRIPTION	Unit	Est. No. of Units	Unit Price	Item Total
SCHEDULE II - TEMPORARY WATER SERVICES					
31 20 00	Earthwork				
31 20 00a	Crushed Stone Backfill , in Trench for Permanent Water Service Lines in Streets and Asphalt or Concrete Driveways from Top of Bedding to Finished Grade (Temporary Water Service Lines Paid Separately)	LF	1,000		\$ -
33 12 13	Water Services				
3/4-inch or 1-inch Water Services - Including Material, Labor, and Equipment					
33 12 13a	8-inch x 3/4-inch Double Strap Tapping Saddle for Temporary Service , Including Excavation, Tap, Corporation Stop, Complete-in-place	EA	30		\$ -
33 12 13a-1	Temporary 3/4-inch Type K Copper Tubing by Open Cut	LF	4,500		\$ -
33 12 13a-2	Reconnect Temporary 3/4-inch Copper Service Line to Existing Water Service Line or Meter , Including Miscellaneous Fittings or Couplings, Backfill, Grading, Seeding, and Straw Mulch	EA	30		\$ -
33 12 13b	8-inch x 1-inch Double Strap Tapping Saddle for Temporary Service , Including Excavation, Tap, Corporation Stop, Complete-in-place	EA	3		\$ -
33 12 13b-1	Temporary 1-inch Type K Copper Tubing by Open Cut	LF	100		\$ -
33 12 13b-2	Reconnect Temporary 1-inch Copper Service Line to Existing Water Service Line or Meter , Including Miscellaneous Fittings or Couplings, Backfill, Grading, Seeding, and Straw Mulch	EA	3		\$ -
33 12 13c	Plug or Cap Temporary 3/4-inch or 1-inch Copper Service Line at Main Line Tapping Saddle , After Permanent Tap is in Service, Including Miscellaneous Fittings or Couplings, Backfill, Grading, Seeding, and Straw Mulch	EA	30		\$ -
2-inch Water Services - Including Material, Labor, and Equipment					
33 12 13a	8-in x 2-in Double Strap Tapping Saddle , Including Excavation, Tap, Corporation Stop, Complete-in-place	EA	5		\$ -
33 12 13b	Temporary 2-inch PEX or Type K Copper Tubing by Open Cut	LF	100		\$ -
33 12 13c	Reconnect Temporary 2-inch PEX or Copper Service Line to Existing Water Meter , Including Miscellaneous Fittings or Couplings, Backfill, Grading, Seeding, and Straw Mulch	EA	5		\$ -
33 12 13d	Plug or Cap Temporary 2-inch PEX or Copper Service Line at Main Line Tapping Saddle , After Permanent Tap is in Service, Including Miscellaneous Fittings or Couplings, Backfill, Grading, Seeding, and Straw Mulch	EA	5		\$ -
TOTAL SCHEDULE II				\$	-

Item No.	DESCRIPTION	Unit	Est. No. of Units	Unit Price	Item Total
TOTAL SCHEDULE I				\$	-
TOTAL SCHEDULE II				\$	-
TOTAL (SCHEDULES I & II)				\$	-

Notes:

1. Contractor shall Bid on all Schedules.
2. The Owner may award any combination of Schedules. Contract will be awarded (if it is awarded) to the responsible and responsive Bidder submitting the lowest Bid sum in the selected combination of Schedules.
3. Some schedules may not be awarded.
4. Contractor certifies that he has reviewed the Drawings and Specifications and that all work not specifically listed in the Bid Schedule is included in the prices for various items listed in the Bid Schedule.

Bidder: _____ Date: _____

By: _____ (Signature) Title: _____

Address: _____

City: _____ State: _____ Zip Code: _____

Telephone: _____

BID SCHEDULE (CONTRACT 2)
BATTLEFIELD PARKWAY WATER LINE REPLACEMENT - FANT DRIVE TO CEDAR LANE
CITY OF FORT OGLETHORPE
FORT OGLETHORPE, GEORGIA

SCHEDULE I - WATER LINE (FANT DRIVE TO CEDAR LANE)

Item No.	DESCRIPTION	Unit	Est. No. of Units	Unit Price	Item Total
00 61 13	Performance & Payment Bonds (Max 2% of Bid)	LS	1		\$ -
00 72 00	General Conditions , Including Project Management, Site Safety and Security, Site Utilities, Portable Toilet, Maintenance, and Supervision	LS	1		\$ -
01 11 00	Mobilization (Maximum 2.5% of Bid) Including Locating and Excavating (pot-holing) the Existing Utilities, Coordination with the City of Fort Oglethorpe, and Staking or marking center line for Pipe Alignment	LS	1		\$ -
01 32 38	Pre-Construction Video Taping of Existing Ground Conditions along the path of the Proposed Water Line Improvements	LS	1		\$ -
01 22 00	Traffic Control Devices for Traffic Control and Road Closure to Meet MUTCD and GDOT Requirements and in Coordination with the City of Fort Oglethorpe	LS	1		\$ -
01 78 39	GPS Survey for Record Drawings	LS	1		\$ -
03 05 23	Utility Line Crossings of Highways & Roads				
03 05 23a	Roadway Crossing for Water Lines by Open Cut Method. Complete Installation, Including Excavation and Compacted Backfill of Trench, Installation of 16-in Steel Casing Pipe , End Seals, Topsoil, Fine Grading, Seeding, and Mulching (Furnishing and Installation of 8-in DIP Water Lines Not Included in this Item)	LF	60		\$ -
03 30 00	Cast-In-Place Concrete , Complete in Place as Specified and/or Shown on the Drawings				
03 30 00a	Cast-In-Place Concrete - 3,000 PSI Class B for Thrust Blocks, Pipe Encasement, and Pipe Protection for Open Cut Trenches in Paved Areas	CY	100		\$ -
03 30 00b-1	Class A (4,000 psi) 8-inch Thick Concrete for Driveway Apron and Parking Lot Repairs , Including Excavation, Bedding, Reinforcement Wire, Form Work, Concrete Mix, Pour and Finish Rubbing, Complete In Place as Shown in Detail on the Plans. (As directed by the Engineer) (GAB Base Stone Paid Separately)	SF	3,860		\$ -
03 30 00b-2	Class A (4,000 psi) 8-inch Thick Concrete Pavement Base for Asphalt Road Repairs per GDOT Standard 1401 , Including Excavation, Bedding, Reinforcement Wire, Form Work, Concrete Mix, Pour and Finish Rubbing, Complete In Place as Shown in Detail on the Plans. (As directed by the Engineer) (GAB Base Stone Paid Separately)	SF	3,200		\$ -

Item No.	DESCRIPTION	Unit	Est. No. of Units	Unit Price	Item Total
03 30 00c	Class A (4,000 psi) 4-inch Thick Concrete for Sidewalk Repairs , Including Excavation, Bedding, Reinforcement Wire, Form Work, Concrete Mix, Pour and Finish Rubbing, Complete In Place as Shown in Detail on the Plans. (As directed by the Engineer) (GAB Base Stone Paid Separately)	SF	3,800		\$ -
03 30 00d	Class A (4,000 psi) 8-inch Thick Concrete for Median Repairs , Including Excavation, Bedding, Reinforcement Wire, Form Work, Concrete Mix, Pour and Finish Rubbing, Complete In Place as Shown in Detail on the Plans. (As directed by the Engineer) (GAB Base Stone Paid Separately)	SF	120		\$ -
03 30 00e	Class A (4,000 psi) 4-inch Thick Concrete for Curb Cut Ramp , Including Excavation, Bedding, Reinforcement Wire, Form Work, Concrete Mix, Pour Finish Rubbing, and Detectable Warning Surface, Complete In Place as Shown in Detail on the Plans. (As directed by the Engineer) (GAB Base Stone Paid Separately)	SF	1,050		\$ -
03 30 00f-1	Class A (4,000 psi) 6-inch Thick Concrete for Header Curb (GDOT Standard 9032B, Type 2) , Including Excavation, 2-Inch Bedding Stone, Form Work, Expansion Joints, Finish Rubbing, and Site Restoration, Complete-In-Place	LF	400		\$ -
03 30 00f-2	Class A (4,000 PSI) Concrete for Curb and Gutter (GDOT Standard 9032B, Type 2) , Including Form Work, Expansion Joints, Finish Rubbing, and Roadway Repair. Complete-In-Place.	LF	100		\$ -
31 20 00	Earthwork				
31 20 00a	Unclassified Demolition/Excavation of Existing Roadway, Curbs, Sidewalks, Brick, and Debris Required for Water Line Trench and Temporary Service Lines, Including Preservation of Existing Utilities located near Water Line Trench, Temporary Removal of Signage, Fences, etc.	LS	1		\$ -
31 20 00a-1	Demolition and Removal of Existing Asphalt Pavement , Including Saw-cutting, Excavation, and Disposal of Asphalt Debris	LF	1,800		\$ -
31 20 00b-1	Site Restoration Complete , for Areas outside Paved Roadway or Sidewalk Areas, Including Restoration of Landscaping, Business Signs, Fences, etc.	LS	1		\$ -
31 20 00b-2	Site Restoration Complete , Including Temporary Removal and Re-Installation of Lamp Posts with All Associated Appurtenances As Required for Construction of New Water Line, Including Lamp Post Foundation and miscellaneous Fittings within the Foundation (As Directed by Engineer)	EA	13		\$ -

Item No.	DESCRIPTION	Unit	Est. No. of Units	Unit Price	Item Total
31 20 00c-1	Crushed Stone Backfill , in Trench for 8-in Water Lines in Streets and Asphalt or Concrete Driveways from Top of Bedding to Finished Grade	LF	1,670		\$ -
31 20 00c-2	Crushed Stone Backfill , in Trench for Permanent Water Service Lines in Streets and Asphalt or Concrete Driveways from Top of Bedding to Finished Grade (Temporary Water Service Lines Paid Separately)	LF	300		\$ -
31 20 00d	Crushed Stone Bedding Material , in Excess of that Required for Standard Bedding and Haunching, where Unsuitable Soil is Encountered or where Additional Material for Bedding is Required or as Directed by the Engineer, Including Undercut Excavation, Disposal, and Stone Placement	CY	100		\$ -
31 20 00e-1	Compacted Crushed Base Stone (GAB) for Asphalt and Concrete Pavement and Repair Areas , Including Stone Placement, Compaction, and Fine Grading for Roads, Parking Lots, Driveways, and Transitions to Existing Driveways	Tons	200		\$ -
31 20 00e-2	Compacted Crushed Base Stone (GAB) for Concrete Sidewalk, Curb Ramp, and Repair Areas , Including Stone Placement, Compaction, and Fine Grading for Roads, Parking Lots, Driveways, and Transitions to Existing Driveways	Tons	150		\$ -
31 20 00f-1	Trench Rock Excavation by Drill & Blast, Rock Trenching, or Hoe-ramming Methods, Including Hauling and Proper Disposal of Spoil Materials	LF	500		\$ -
31 20 00f-2	Clean Fill Dirt Backfill , for Initial Backfill above Pipe in areas where Trench Rock Removal was performed (As Directed by the Engineer)	CY	200		\$ -
31 20 00g	Sifted Topsoil (Purchased and Imported to Project Site) as Approved by Engineer, Not Including On-site Soil	CY	180		\$ -
31 20 00h	Final Grading and Cleanup of areas outside Sidewalks, Driveways, Parking Lots, and Roads, Including Topsoil Placement, and Grading (Not Including Grassing and Mulch)	LF	1,140		\$ -
31 25 00	Sedimentation and Erosion Control				
31 25 00a-1	Temporary Silt Fence (Sd1-NS); Type Non-Sensitive Silt Fence , Including Trenching, Installation, Posts, Filter Fabric, Woven Wire Fence Backing, Tie Wire, Bracing, and Maintenance and Removal	LF	500		\$ -
31 25 00a-2	Temporary Silt Fence (Sd1-S); Type Sensitive Silt Fence , Including Trenching, Installation, Posts, Filter Fabric, Woven Wire Fence Backing, Tie Wire, Bracing, and Maintenance and Removal	LF	285		\$ -

Item No.	DESCRIPTION	Unit	Est. No. of Units	Unit Price	Item Total
31 25 00b	Straw Matting for Slope or Ditch Stabilization (Ss) , Including Staples for Matting	SY	100		\$ -
31 25 00c	Inlet Sediment Trap (Sd2) , For Inlet Protection Including Installation, Maintenance, and Removal	EA	4		\$ -
31 25 00d	Construction Entrance (CO) Including Stone and Geotextile Filter Fabric	EA	2		\$ -
31 25 00e	Concrete Washout Structure (CW) , Including Installation, Maintenance, and Removal	EA	3		\$ -
32 10 00	New and Replacement Paving - Including Materials				
32 10 00a	Heavy Duty Asphalt Pavement Replacement for Roads, Trench-Width with 2.5" of 19 mm GDOT mix and 1.5" of 9.5 mm GDOT mix, Including Saw-cutting per GDOT Standard 1401	Tons	60		\$ -
32 10 00b	Asphalt Pavement Replacement for Driveways and Parking Lots, Trench-Width with 4" of 19 mm Binder Mix, Including Saw-cutting and Base Stone Compaction	Tons	200		\$ -
32 10 00c	Asphalt Pavement Milling for Trench Width Patch Paving 2-Inches Deep , Including Demolition, Excavation, Traffic Control, Hauling, and Disposal per Local Rules and Regulations (6-Inch Minimum Beyond Trench Width)	LF	1,500		\$ -
32 10 00d	Asphalt Pavement Replacement for Driveways and Parking Lots, Trench-Width with 2" of 9.5 mm GDOT Topping Mix	Tons	150		\$ -
32 92 19	Seeding and Mulching - Including Materials				
32 92 19a	Temporary Mulching (Ds1)	LF	1,140		\$ -
32 92 19b	Temporary Seeding and Mulching (Ds2)	LF	1,140		\$ -
32 92 19c	Permanent Seeding And Mulch (Ds3) , Including Topsoil placement, Seed Fertilizer, Limestone, and Mulch	LF	1,140		\$ -
33 11 00	High Density Polyethylene (HDPE) Sleeve (Poly-Wrap) - Including Materials				
33 11 00a	HDPE Poly-Wrap for 8-in Ductile Iron Pipe Installed in Trench near existing Gas Lines	LF	200		\$ -
33 12 13	Water Services				
	3/4-inch or 1-inch Water Services - Including Material, Labor, and Equipment				
33 12 13a	8-inch x 3/4-inch Double Strap Tapping Saddle , Including Excavation, Tap, Corporation Stop, Complete-in-place	EA	12		\$ -
33 12 13a-1	Permanent 3/4-inch Type K Copper Tubing by Open Cut	LF	400		\$ -
33 12 13a-2	Reconnect Permanent 3/4-inch Copper Service Line to Existing Water Service Line or Water Meter , Including Miscellaneous Fittings or Couplings, Backfill, Grading, Seeding, and Straw Mulch	EA	15		\$ -

Item No.	DESCRIPTION	Unit	Est. No. of Units	Unit Price	Item Total
33 12 13b	8-inch x 1-inch Double Strap Tapping Saddle , Including Excavation, Tap, Corporation Stop, Complete-in-place	EA	3		\$ -
33 12 13b-1	Permanent 1-inch Type K Copper Tubing by Open Cut	LF	150		\$ -
33 12 13b-2	Reconnect Permanent 1-inch Copper Service Line to Existing Water Service Line or Water Meter , Including Miscellaneous Fittings or Couplings, Backfill, Grading, Seeding, and Straw Mulch	EA	3		\$ -
33 12 13c	Relocate Existing Water Meter , Including, Backfill, Grading, Seeding, and Straw Mulch (If required for Installation of new DIP Water Line or Temporary Service Line)	EA	7		\$ -
33 12 13d	2-inch Water Services - Including Material, Labor, and Equipment				
33 12 13d-1	8-in x 2-in Double Strap Tapping Saddle , Including Excavation, Tap, Corporation Stop, Complete-in-place	EA	4		\$ -
33 12 13d-2	Permanent 2-in Type K Copper Tubing by Open Cut , Including Excavation, Bedding, and Backfill for Complete Installation	LF	150		\$ -
33 12 13d-3	Reconnect Permanent 2-in Copper Service Line to Existing Water line or Meter , Including Miscellaneous Fittings or Couplings, Backfill, Grading, Seeding, and Straw Mulch	EA	4		\$ -
33 12 19	Hydrants - Including Material, Labor, and Equipment				
33 12 19a	New Fire Hydrant Assembly Complete , Including Hydrant, Anchor Coupling, 6-in Gate Valve, Thrust Restraint, and Stone Bedding (MJ Anchor Tee and Pipe Length to be Paid in Other Pay Items)	EA	4		\$ -
33 12 19b	Removal of Existing Fire Hydrant Assembly , Including Excavation, Removal of Existing Hydrant, Pipe, Fittings, Valve, and Appurtenances, Disposal of Soil and Debris, and Backfill	EA	4		\$ -
33 40 00	Material, Labor, and Equipment to Replace Existing Storm Culverts				
33 40 00a	18-Inch Diameter Reinforced Concrete Pipe (RCP) , Including Excavation, Removal of Existing Pipe, Disposal of Soil and Debris, Bedding and Backfill, Complete-in-Place	LF	80		\$ -
40 05 13.53	Ductile Iron Pipe (DIP) - Including Material, Labor and Equipment				
40 05 13.53a-1	Removal of Existing 8-in PVC and Replacement in-place with New 8-in Ductile Iron Pipe Installed in Trench, Including All Materials, Labor and Equipment	LF	1,540		\$ -
40 05 13.53a-2	New 8-in Ductile Iron Pipe Installed in Trench, Including All Materials, Labor and Equipment	LF	650		\$ -
40 05 13.53a-3	New 8-in Ductile Iron Pipe Installed in Casing, Including All Materials, Labor and Equipment	LF	50		\$ -

Item No.	DESCRIPTION	Unit	Est. No. of Units	Unit Price	Item Total
40 05 13.53b	Ductile Iron MJ Pipe Fittings (Published Weights for Ductile Iron, AWWA C-153 Compact Fittings)				
	8-inch Fittings and Gaskets - Including Material, Labor, and Equipment				
40 05 13.53b-1	8-in Miscellaneous Ductile Iron Fittings Not Itemized for Payment per Each (Paid by Weight)	Lbs.	1,000		\$ -
40 05 13.53b-2	8-in x 8-in (Branch) MJ Tee	EA	2		\$ -
40 05 13.53b-3	8-in x 6-in MJ Anchor Tee	EA	4		\$ -
40 05 13.53b-4	8-in 90 degree MJ Bend	EA	1		\$ -
40 05 13.53b-5	8-in 45 degree MJ Bend	EA	7		\$ -
40 05 13.53b-6	8-in 22.5 degree MJ Bend	EA	1		\$ -
40 05 13.53b-7	8-in MJ Cap	EA	2		\$ -
40 05 13.53b-8	8-in MJ Sleeve	EA	4		\$ -
40 05 13.53b-9	8-in Anchor Coupling	EA	15		\$ -
40 05 13.53b-10	8-in Foster Adaptor	EA	15		\$ -
40 05 13.53b-11	8-in Mechanical Joint Restraint Devices	EA	60		\$ -
40 05 13.53b-12	8-in Bell or Pipe Joint Restrained Pipe Devices or Gaskets	EA	100		\$ -
40 05 13.53c	Connection to Existing Water Line - Including Material, Labor, and Equipment				
40 05 13.53c-1	Connection to Existing 8-in PVC Water Line by Cut-In Method, Including All Materials, Labor, Equipment, Supervision, and Coordination with the City of Fort Oglethorpe	EA	1		\$ -
40 05 13.53c-2	Connection to 8-in Gate Valve, Including All Materials, Labor, Equipment, Supervision, and Coordination with the City of Fort Oglethorpe	EA	5		\$ -
40 05 13.53c-3	Connection to an Existing 8-Inch Water Line by Wet Tap Method, Including 8" X 8" Tapping Sleeve and 8" Tapping Valve	EA	1		\$ -
40 05 61	Valves - Including Material, Labor, and Equipment				
40 05 61a	8-in Gate Valve Installed, Including Valve Box & Cover, Concrete Support Block, Thrust Block, and Valve Box Extensions	EA	7		\$ -
40 05 61b	8-in Gate Valve Installed on Existing 8-in PVC Water Line by Cut-in Method, Including Coordination with the City of Fort Oglethorpe and Affected Properties, Valve Box & Cover, Concrete Support Block, Thrust Block, and Valve Box Extensions	EA	5		\$ -
40 05 61c	Removal of Existing 8-in Gate Valve, Including Excavation, Removal of Existing Valve and Appurtenances, Disposal of Soil and Debris, and Backfill	EA	5		\$ -
	Construction Contingency				
C1	Construction Allowance for Unforeseen Circumstances and/or Discoveries Encountered During Construction that Require Additional Work Beyond the Current Scope of Work (As directed by	LS	1	\$ 100,000.00	\$ 100,000.00
TOTAL SCHEDULE I					

Item No.	DESCRIPTION	Unit	Est. No. of Units	Unit Price	Item Total
SCHEDULE II - TEMPORARY WATER SERVICES					
31 20 00	Earthwork				
31 20 00a	Crushed Stone Backfill , in Trench for Temporary Water Service Lines in Streets and Asphalt or Concrete Driveways from Top of Bedding to Finished Grade (Temporary Water Service Lines Paid Separately)	LF	500		\$ -
33 12 13	Water Services				
3/4-inch or 1-inch Water Services - Including Material, Labor, and Equipment					
33 12 13a	8-inch x 3/4-inch Double Strap Tapping Saddle for Temporary Service , Including Excavation, Tap, Corporation Stop, Complete-in-place	EA	5		\$ -
33 12 13a-1	Temporary 3/4-inch Type K Copper Tubing by Open Cut	LF	1,000		\$ -
33 12 13a-2	Reconnect Temporary 3/4-inch Copper Service Line to Existing Water Service Line or Meter , Including Miscellaneous Fittings or Couplings, Backfill, Grading, Seeding, and Straw Mulch	EA	12		\$ -
33 12 13b	8-inch x 1-inch Double Strap Tapping Saddle for Temporary Service , Including Excavation, Tap, Corporation Stop, Complete-in-place	EA	2		\$ -
33 12 13b-1	Temporary 1-inch Type K Copper Tubing by Open Cut	LF	150		\$ -
33 12 13b-2	Reconnect Temporary 1-inch Copper Service Line to Existing Water Service Line or Meter , Including Miscellaneous Fittings or Couplings, Backfill, Grading, Seeding, and Straw Mulch	EA	2		\$ -
33 12 13c	Plug or Cap Temporary 3/4-inch or 1-inch Copper Service Line at Main Line Tapping Saddle , After Permanent Tap is in Service, Including Miscellaneous Fittings or Couplings, Backfill, Grading, Seeding, and Straw Mulch	EA	6		\$ -
2-inch Water Services - Including Material, Labor, and Equipment					
33 12 13a	8-in x 2-in Double Strap Tapping Saddle , Including Excavation, Tap, Corporation Stop,	EA	3		\$ -
33 12 13b	Temporary 2-inch PEX or Type K Copper Tubing by Open Cut	LF	250		\$ -
33 12 13c	Reconnect Temporary 2-inch PEX or Copper Service Line to Existing Water Meter , Including Miscellaneous Fittings or Couplings, Backfill, Grading, Seeding, and Straw Mulch	EA	3		\$ -
33 12 13d	Plug or Cap Temporary 2-inch PEX or Copper Service Line at Main Line Tapping Saddle , After Permanent Tap is in Service, Including Miscellaneous Fittings or Couplings, Backfill, Grading, Seeding, and Straw Mulch	EA	3		\$ -
TOTAL SCHEDULE II				\$	-

Item No.	DESCRIPTION	Unit	Est. No. of Units	Unit Price	Item Total
TOTAL SCHEDULE I				\$	-
TOTAL SCHEDULE II				\$	-
TOTAL (SCHEDULES I & II)				\$	-
<p>Notes:</p> <p>1. Contractor shall Bid on all Schedules.</p> <p>2. The Owner may award any combination of Schedules. Contract will be awarded (if it is awarded) to the responsible and responsive Bidder submitting the lowest Bid sum in the selected combination of Schedules.</p> <p>3. Some schedules may not be awarded.</p> <p>4. Contractor certifies that he has reviewed the Drawings and Specifications and that all work not specifically listed in the Bid Schedule is included in the prices for various items listed in the Bid Schedule.</p>					
Bidder:			Date:		
By:		(Signature)	Title:		
Address:					
City:		State:		Zip Code:	
Telephone:					

02

GDOT PERMIT U-047-011462-6 NOTES:

1. THE DISTANCE FROM THE EXISTING WATERLINE TO THE RIGHT-OF-WAY AND/OR EDGE OF PAVEMENT VARIES. THE EXISTING WATERLINE LOCATION IS SHOWN IN APPROXIMATE LOCATION AND SHALL BE FIELD VERIFIED. REPLACEMENT OF THE EXISTING PVC WATERLINE WITH NEW DIP WATERLINE WILL BE IN PLACE AT THE FIELD VERIFIED LOCATIONS.
2. EXTENTS OF OPEN CUT TRENCH CONSTRUCTION WILL BE WITHIN THE RIGHT-OF-WAY FROM FANT DRIVE TO STUART ROAD.

03

ADDENDUM NO 1 NOTES:

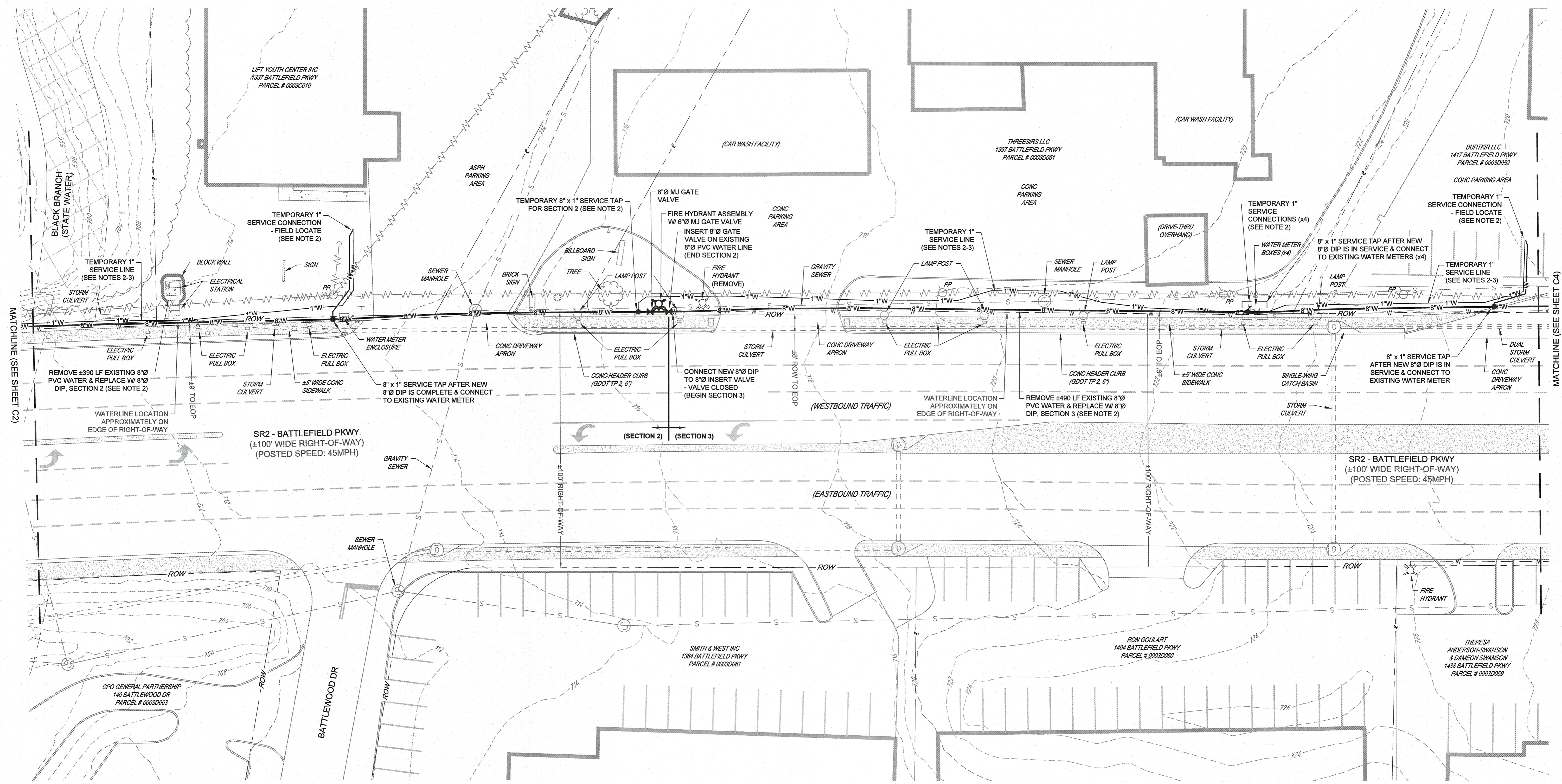
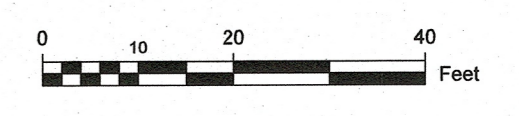
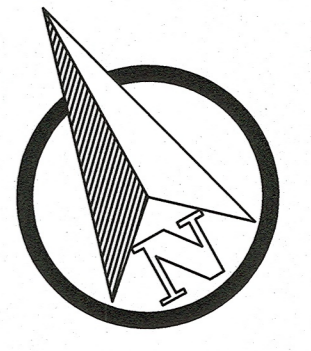
1. TIE-IN TO EXISTING CONTRACT 1 CHANGES.
2. PROPOSED WATERLINE LINETYPES CHANGED FOR CLARITY.

CONSTRUCTION NOTES:

1. EXISTING UTILITIES ARE SHOWN IN APPROXIMATE LOCATION AND ARE NOT CERTIFIED CORRECT BY THE ENGINEER. CONTRACTOR SHALL FIELD VERIFY LOCATION AND ELEVATION OF ALL EXISTING UTILITIES PRIOR TO CONSTRUCTION.
2. LOCATION OF THE EXISTING WATERLINE VARIES. THE EXISTING WATERLINE SHALL BE REMOVED AND REPLACED IN SEGMENTS AS WHERE SHOWN ON THE PLAN SHEETS. DURING THE REPLACEMENT OF A GIVEN WATERLINE SEGMENT, TEMPORARY SERVICE LINES SHALL BE ESTABLISHED FOR THE METER CONNECTIONS WITHIN THAT SEGMENT. THE NEW WATERLINE SEGMENT SHALL BE TESTED, DISINFECTED, FLUSHED, AND PUT INTO SERVICE. AFTER THE NEW WATERLINE SEGMENT IS IN SERVICE, PERMANENT SERVICE CONNECTIONS SHALL BE MADE AND THE TEMPORARY SERVICE LINES SHALL BE REMOVED.
3. TEMPORARY SERVICE LINES SHALL BE INSTALLED WITHIN THE EXISTING WATERLINE EASEMENT.
4. SITE SHALL BE RESTORED TO ITS EXISTING STATE AFTER THE NEW WATERLINE IS IN SERVICE. RESTORATION INCLUDES PAVEMENT REPLACEMENT, DRIVEWAY APRON REPLACEMENT, HEADER CURB AND/OR CURB AND GUTTER REPLACEMENT, PERMANENT SEEDING AND MULCHING, ETC.



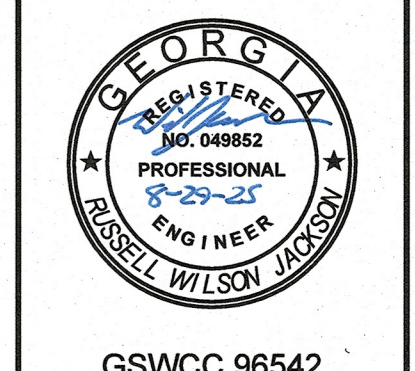
Know what's below.
Call before you dig.



REVISIONS		DESIGN	CHECKED	APPROVED
NO.	DESCRIPTIONS	RWU	PRS	RWU
02	GDOT PERMIT REVISIONS	RWU		
03	ADDENDUM NO 1	RWU		

PROPOSED PLAN
(SHEET 2 OF 4)

FORT OGLETHORPE, GEORGIA
BATTLEFIELD PARKWAY WATER LINE REPLACEMENT
FANT DRIVE TO SOUTH CEDAR LANE



GSWCC 96542

JOB NO.
G24024-01

ISSUE DATE
03/28/2025

DRAWING NO.
C3.03

WATERLINE PLAN VIEW
SCALE: 1" = 20'